

MRI examination

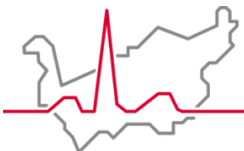
INFORMATION FOR PATIENTS



Valais Romand Hospital Center
Diagnostic and interventional medical imaging
department

Your doctor has ordered an MRI scan.

This document provides you with some information to help you familiarise yourself with this imaging technique.



Hôpital du Valais
Spital Wallis

www.hopitalvs.ch | www.spitalvs.ch

WHATS IS A MRI?

MRI, or Magnetic Resonance Imaging, is a painless, non-irradiating imaging technique that enables targeted, precise images to be taken of the various anatomical structures of the human body: the brain, joints, liver, heart and spinal column.

MRI uses a magnetic field generated by a magnet that surrounds a luminous tunnel that is permanently open at both ends.

HOW DOES THE EXAMINATION WORK?

When making an appointment with the secretary, please inform him or her:

- if you are claustrophobic
- if you have an implanted medical device (pacemaker, neurostimulator, ventriculoperitoneal shunt, etc.).

When you arrive, we will ask you to complete a safety questionnaire. This enables us to ensure that the examination will be carried out safely.

You will be taken care of by the radiology technician. This radiographer in blue scrubs will guide you throughout this examination. They will give you all the information and advice you need to make sure it goes smoothly.

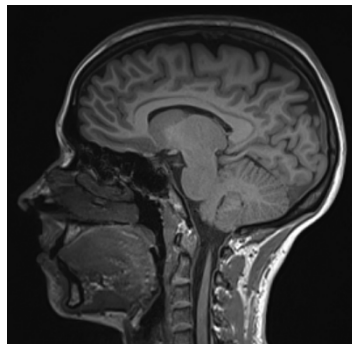
Before the examination, you must leave all your personal belongings, dentures, hearing aids, watches, jewellery and all metallic objects in general in your dressing room.

To help with the diagnosis, the radiologist may request an intravenous injection of a gadolinium-based contrast agent. This is done via a small catheter usually placed in a vein in the arm. Other opacification techniques may also be used depending on the indication.

You will be installed comfortably on a mobile bed that will slide gently into the opening of the machine and stabilise to begin the examination. The MRI is open at both ends: you won't be locked in!

You are not alone, behind the glass the radiology technician can see you perfectly. You will have an alarm bell that you can press during the examination to alert us if necessary, an intercom is incorporated into the device and you will be able to talk to us very easily.

The examination begins, producing a repetitive noise that is completely normal and nothing to worry about. This noise is interspersed with silent pauses. We will give you headphones to listen to music or foam earplugs to reduce the noise.



Sagittal section of a T1-weighted MRI scan of the brain

HOW LONG DOES THE SCAN TAKE?

The duration of the examination depends on the region explored and the preparation required:

Brain : **30-45 min.**

Osteoarticular : **30 min.**

Spinal column : **40 min.**

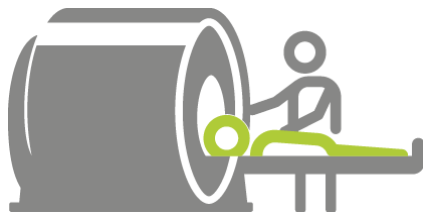
Abdomen : **45 min.**

Cardiac : **60 min.**

AND THE RESULTS?

MRI is an imaging technique that provides information about your state of health. To make an accurate assessment, this information needs to be compared with the information available to the prescribing doctor: the radiologist's report will be sent to him or her.

If you wish to forward a copy of the examination report to another doctor, please send your request to the receptionist in Radiology when you are admitted.



ADDRESSES AND CONTACTS

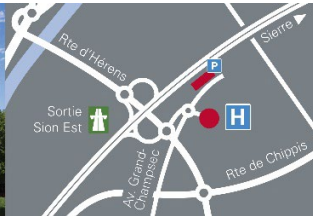
Valais Hospital | Valais Romand Hospital Center (CHVR)

You can find our Medical Imaging Services at our hospital sites in **Sierre**, **Sion** and **Martigny**.

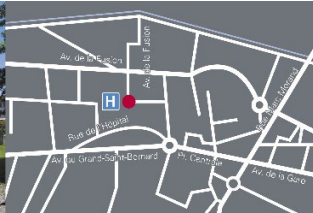
Your appointment



Sierre Hospital | Rue St-Charles 14 | 3960 Sierre



Sion Hospital | Av. Grand-Champsec 80 | 1950 Sion



Martigny Hospital | Av. de la Fusion 27 | 1920 Martigny



Diagnostic and interventional
medical imaging department
Call Center : **0800 603 800**

